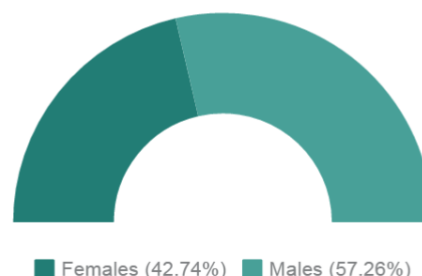
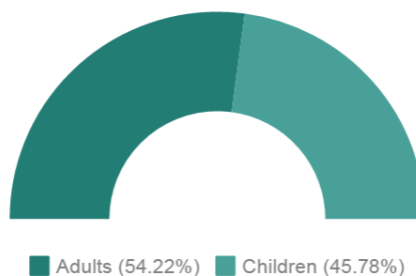


1. Irish CF population



1,219 were living with CF in 2015.
This is 175 more than in 2010.



2. Diagnosis



35-40 people are diagnosed each year

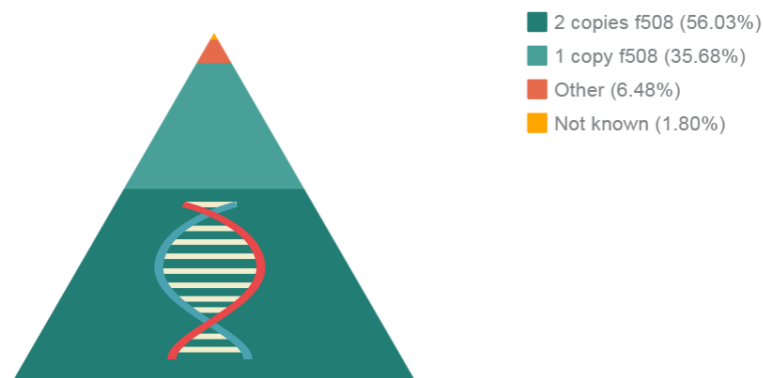
Newborn screening began in July 2011

80% of people diagnosed in 2015
were detected by newborn screening



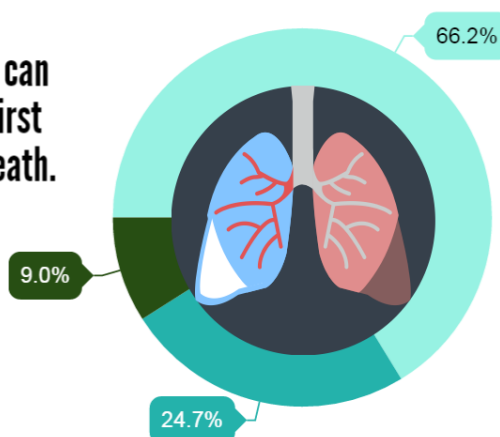
3. CF genotypes

**F508del is the most common
CF-causing mutation**



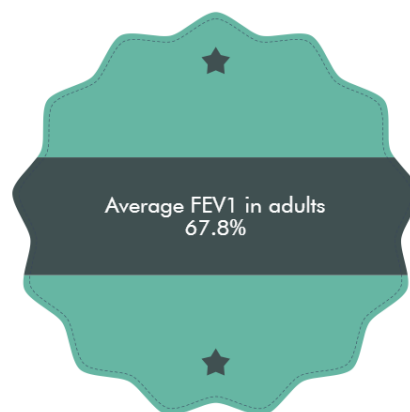
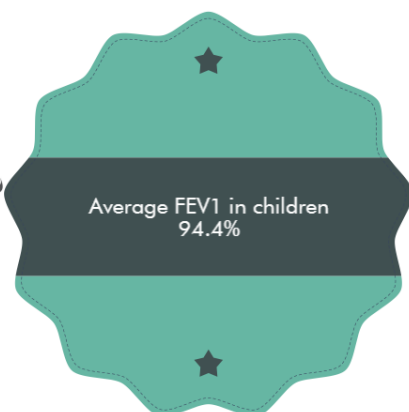
4. Lung health

FEV1 is the amount of air that can be forcefully exhaled in the first second after taking a deep breath.



FEV1% is a percentage of the average value for healthy people of the same age, gender and height, which is set at 100%.

■ Mild to normal (>69% FEV1) (66.27%) ■ Moderate (40-69% FEV1) (24.72%) ■ Severe (<40% FEV1) (9.01%)



5. Lung transplant

